



— VINTAGE & INDUSTRIAL —

LIMEHOUSE

1900

— LIGHTING —



The Limehouse Lamp Company Ltd has crafted the 1900 Collection to recreate the warmth of the original Thomas Edison filament lamp. The range of fittings is made exclusively of solid brass and designed around the Ferrowatt range of Tungsten filament lamps. The look evokes a simple understated, unstructured line. Inspired by the turn of the 20th century inventions by the greats, Thomas Edison, Guglielmo Marconi and Alexander Graham Bell. The era was the beginning of the modern age as we know it. When on the brink of flight and steam power at its most prevalent our Industrial Age of invention was at its Peak.

The Tommy range named after the World War One Trench Soldier has a simple and functional character well suited to both traditional and contemporary schemes. In Polished Nickel it provides a more modern feel.

The Map Room range inspired by the War Rooms of World War One uses a GU10 Spot Lamp as its light source-readily available in LED form, the range performs brilliantly as accent lighting. Whereas the hanging Pendants are perfect for lighting counters and highlighting confined spaces where glare is undesirable. The polished nickel versions making a particular style statement.

The warmth and character of the Limehouse 1900 collection needs to be seen to be appreciated. The effect of a moth to a flame is ever present with the warm glow provided by these decorative lights. The large selection of variations allow for an endless solution to any required scheme.

All fittings are made of solid brass. Built, wired and finished in our workshops based in the Sussex South Downs of England. All Pendants use silk braided flex (Non US markets only) and are fully CE compliant.

Finishes(AB) Antique brass fittings are supplied antiqued, hand finished and unlacquered giving a warmth and authenticity only available from The Limehouse Lamp Company Ltd.

(N) Polished nickel finished items are plated in Brighton -England to the highest standards and are supplied unlacquered for a truly vintage feel. All Pendants use silk braided flex (Non US markets only).

All fittings are CE compliant under BSEN60598:1:2015.

UL listed product available upon request (subject to alternative fixings in some cases to suit UL requirements) and pendants are not available with silk braided flex.

For any specific requirement not shown, please do not hesitate to contact us. or if you would like to see further creations from our Georgian, Victorian and Edwardian Collections please go to www.limehouselighting.com.

We look forward to hearing from you

A handwritten signature in dark ink, appearing to read "Elliott Maurice", written in a cursive style with a long, sweeping underline.

Elliott Maurice - Managing Director



1900-7-WL-AB (Victorian townhouse, Bath, England). Page: 68



Custom copper cluster (Roomset feature). Page: N/A



1900-6-WAD (Courtesy The Period House Store, Richmond, Yorkshire, England): Page: 63



1900-6-FL-AB (Courtesy Establish Design, Salt Lake City, Utah, USA): Page: 66

HISTORIC & INDUSTRIAL
LIMEHOUSE
1900
 LIGHTING



(1900-1-C3) - Page 8



(1900-1-C5) - Page 9



(1900-1-F) - Page 10



(1900-1-P) - Page 11



(1900-1-P3) - Page 12



(1900-1-P5) - Page 13



(1900-1-W) - Page 14



(1900-1-WAD) - Page 15



(1900-2-F) - Page 16



(1900-2-P) - Page 17



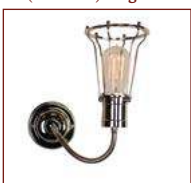
(1900-2-P2) - Page 18



(1900-2-P3) - Page 19



(1900-2-W) - Page 20



(1900-3-FL) - Page 21



(1900-3-C3) - Page 22



(1900-3-C5) - Page 23



(1900-3-F) - Page 24



(1900-3-P) - Page 25



(1900-3-P3) - Page 26



(1900-3-P5) - Page 27



(1900-3-W) - Page 28



(1900-3-W2) - Page 29



(1900-3-AW) - Page 30



(1900-3-WAD) - Page 31



(1900-4-C3) - Page 32



(1900-4-C5) - Page 33



(1900-4-F) - Page 34



(1900-4-P) - Page 35



(1900-4-P3) - Page 36



(1900-4-P5) - Page 37



(1900-4-W) - Page 38



(1900-4-W2) - Page 39



(1900-4-WA) - Page 40



(1900-4-WAD) - Page 41



(1900-4-FL) - Page 42



(1900-5-C3) - Page 43



(1900-5-C5) - Page 44



(1900-5-F) - Page 45



(1900-5-FL) - Page 46



(1900-5-P) - Page 47



(1900-5-P3) - Page 48



(1900-5-P5) - Page 49



(1900-5-W) - Page 50



(1900-5-W2) - Page 51



(1900-5-AW) - Page 52



(1900-5-WAD) - Page 53



(1900-6-C3) - Page 54



(1900-6-C5) - Page 55



(1900-6-ASW) - Page 56



(1900-6-ADW) - Page 57



(1900-6-F) - Page 58



(1900-6-P) - Page 59



(1900-6-P3) - Page 60



(1900-6-P5) - Page 61



(1900-6-AW) - Page 62



(1900-6-WAD) - Page 63



(1900-6-WS) - Page 64



(1900-6-WL) - Page 65



(1900-6-FL) - Page 66



(1900-7-WS) - Page 67



(1900-7-WL) - Page 68



LB1



Specifications

Height: 185mm / 7.25"
Width: 30mm / 1.2"
Depth: 30mm / 1.2"
Lamp Holder: ES
Wattage: 30w
Voltage: (EU Spec) 220-240v / (US Spec) 110V

LB2



Specifications

Height: 130mm / 5.1"
Width: 60mm / 2.4"
Depth: 60mm / 2.4"
Lamp Holder: ES
Wattage: 40w
Voltage: (EU Spec) 220-240v / (US Spec) 110V

LB3



Specifications

Height: 130mm / 5.1"
Width: 90mm / 3.6"
Depth: 90mm / 3.6"
Lamp Holder: ES
Wattage: 30w
Voltage: (EU Spec) 220-240v / (US Spec) 110V

LB4



Specifications

Height: 54mm / 2.1"
Width: 55mm / 2.2"
Depth: 55mm / 2.2"
Lamp Holder: GU10
Wattage: 4-5w
Voltage: (EU Spec) 220-240v / (US Spec) 110V

CEILING AND WALL MOUNTING PLATES

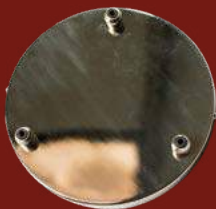
1900-P5 (Shown in N)



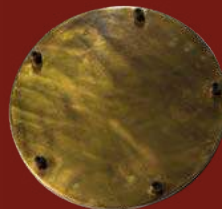
1900-P3 (Shown in AB)



1900-C3 (Shown in N)



1900-C5 (Shown in AB)



1900-100 (Shown in C)



Model	Height	Width	Depth	Fixing Method
1900-P5	40mm / 1.6"	105mm / 4.2"	910mm / 35.75"	2 x side tapped fixing plates multi mount
1900-P3	40mm / 1.6"	105mm / 4.2"	605mm / 23.5"	Side tapped fixing plates multi mount
1900-C5	40mm / 1.6"	330mm / 13"	330mm / 13"	Side tapped fixing strap multi mount
1900-C3	40mm / 1.6"	220mm / 8.6"	220mm / 8.6"	Side tapped fixing strap multi mount
1900-100	65mm / 2.6"	108mm / 4.25"	108mm / 4.25"	2 screw holes

Finishes
Available for
this Collection



N



AB

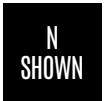
Included
Bulb



LB3



Edison 3 Light Cluster (Small) (1900-1-C3)



Small Edison 3 light cluster solid brass available in Antique Brass and Polished Nickel finish with silk flex. Adjustable height. Static Height adjusts by shortening the cable (Note height to be set on installation then fixed). Shown with 3 x LB3 lamp (supplied Complete). The Edison collection is inspired by Thomas Edison's great flurry of inventions including the distribution of electrical power. The Edison range offering a comprehensive range of lighting solutions. Using imported Ferrowatt Squirrel cage bulbs they create a stunning Vintage effect and visual warmth that works as dramatic feature lighting. The cluster versions look fantastic in a stairwell or over a round table. Used over kitchen island they create a dramatic scene.

Wattage: 3 x 40w ES
Height: Min 310mm / 12.2"
Max 1310mm / 51.6"
Width: 370mm / 14.6"
Depth: 370mm / 14.6"



Edison 5 Light Cluster (Small) (1900-1-C5)



Finishes
Available for
this Collection



N



AB

Included
Bulb



LB3

AB
SHOWN

Wattage: 5 x 40w ES
Height: Min 310mm / 12.2"
Max 1310mm / 51.6"
Width: 500mm / 19.7"
Depth: 500mm / 19.7"

Small Edison 5 light cluster solid brass shown in Antique Brass finish with silk flex. Adjustable height. Static Height adjusts by shortening the cable (Note height to be set on installation then fixed). Shown with 5 x LB3 lamp (supplied Complete). The Edison collection is inspired by Thomas Edison's great flurry of inventions including the distribution of electrical power. The Edison range offering a comprehensive range of lighting solutions. Using imported Ferrowatt Squirrel cage bulbs they create a stunning Vintage effect and visual warmth that works as dramatic feature lighting. The cluster versions look fantastic in a stairwell or over a round table. Used over kitchen island they create a dramatic scene.

Finishes
Available for
this Collection



N



AB

Included
Bulb



LB3



Edison Flush Ceiling Light (Small) (1900-1-F)



N
SHOWN

Small Edison flush ceiling light solid brass available in Antique Brass or Polished Nickel finish, shown with LB3 lamp (supplied Complete). The Edison collection is inspired by Thomas Edison's great flurry of inventions including the distribution of electrical power. The Edison range offering a comprehensive range of lighting solutions. Using imported Ferrowatt Squirrel cage bulbs they create a stunning Vintage effect and visual warmth that works as dramatic feature lighting. The flush version is the perfect solution for a low ceiling. These lights look fantastic when used in rows.

Wattage: 1 x 40w ES
Height: 290mm / 11.4"
Width: 203mm / 8"
Depth: 203mm / 8"



Edison Single Pendant (Small) (1900-1-P)



Finishes
Available for
this Collection



N



AB

Included
Bulb



LB3

AB
SHOWN

Wattage: 1 x 40w ES
Height: Min 310mm / 12.2"
Max 1310mm / 51.6"
Width: 203mm / 8"
Depth: 203mm / 8"

Small Edison single pendant solid brass available in Antique Brass or Polished Nickel Finish with silk flex. Adjustable height. Static Height adjusts by shortening the cable (Note height to be set on installation then fixed). Shown with LB3 lamp (supplied Complete). The Edison range offering a comprehensive range of lighting solutions. Using imported Ferrowatt Squirrel cage bulbs they create a stunning Vintage effect and visual warmth that works as dramatic feature lighting. The single pendant is designed to highlight counters and kitchen islands creating a vintage feature.

Finishes
Available for
this Collection



N



AB

Included
Bulb



LB3



Edison 3 Light Pendant (Small) (1900-1-P3)



N
SHOWN

Small Edison 3 light pendant solid brass available in Polished Nickel or Antique Brass finish with silk flex. Adjustable height. Static Height adjusts by shortening the cable (Note height to be set on installation then fixed). Shown with 3 x LB3 lamp (supplied Complete). The Edison collection is inspired by Thomas Edison's great flurry of inventions including the distribution of electrical power. The Edison range offering a comprehensive range of lighting solutions. Using imported Ferrowatt Squirrel cage bulbs they create a stunning Vintage effect and visual warmth that works as dramatic feature lighting. The pendant versions are perfect for use over a countertop or long kitchen island. Used alongside dedicated task lighting like recessed downlights, the Edison pendants are perfect for adding atmosphere and ambient light.

Wattage: 3 x 40w ES
Height: Min 310mm / 12.2"
Max 1310mm / 51.6"
Width: 730mm / 28.7"
Depth: 203mm / 8"



Edison 5 Light Pendant (Small) (1900-1-P5)



Finishes Available for this Collection



N



AB

Included Bulb



LB3

**AB
SHOWN**

Wattage: 5 x 40w ES
Height: Min 310mm / 12.2"
Max 1310mm / 51.6"
Width: 1060mm / 41.7"
Depth: 203mm / 8"

Small Edison 3 light pendant solid brass available in Polished Nickel or Antique Brass finish with silk flex. Adjustable height. Static Height adjusts by shortening the cable (Note height to be set on installation then fixed). Shown with 3 x LB3 lamp (supplied Complete). The Edison collection is inspired by Thomas Edison's great flurry of inventions including the distribution of electrical power. The Edison range offering a comprehensive range of lighting solutions. Using imported Ferrowatt Squirrel cage bulbs they create a stunning Vintage effect and visual warmth that works as dramatic feature lighting. The pendant versions are perfect for use over a countertop or long kitchen island. Used alongside dedicated task lighting like recessed downlights, the Edison pendants are perfect for adding atmosphere and ambient light.

Finishes Available for this Collection



N



AB

Included Bulb



LB3



Edison Single Wall Light (Small) (1900-1-W)



N
SHOWN

Small Edison flush wall light solid brass available in Antique Brass or Polished Nickel finish, shown with LB3 lamp (supplied Complete). The Edison collection is inspired by Thomas Edison's great flurry of inventions including the distribution of electrical power. The Edison range offering a comprehensive range of lighting solutions. Using imported Ferrowatt Squirrel cage bulbs they create a stunning Vintage effect and visual warmth that works as dramatic feature lighting. The flush version is the perfect solution for a low ceiling. These lights look fantastic when used in rows.

Wattage: 1 x 40w ES
Height: 260mm / 10.2"
Width: 203mm / 8"
Depth: 285mm / 11.2"



Edison Single Adjustable Height Wall Light (Small) (1900-1-WAD)



Finishes
Available for
this Collection



N



AB

Included
Bulb



LB3

AB
SHOWN

Wattage: 1 x 40w ES
Height: Min 300mm / 11.8"
Max 1150mm / 45.3"
Width: 203mm / 8"
Depth: 260mm / 10.2"

Small Edison single adjustable height wall light with silk flex. Adjustable height. Static Height adjusts by shortening the cable (Note height to be set on installation then fixed). Solid brass available in Polished Nickel and Antique Brass finish. shown with LB3 Ferrowatt Tesla Cage Lamp (Supplied Complete). The Edison collection is inspired by Thomas Edison's great flurry on inventions including the distribution of electrical power. The Edison range offering a comprehensive range of lighting solutions. Using imported Ferrowatt Squirrel cage bulbs they create a stunning Vintage effect and visual warmth that works as dramatic feature lighting.

Finishes Available for this Collection



N



AB

Included Bulb



LB3



Edison Flush Ceiling Light (Large) (1900-2-F)



AB
SHOWN

Large Edison flush ceiling light pendant solid brass available in Polished Nickel or Antique Brass Finish. Shown with LB3 Ferrowatt Tesla lamp (Supplied Complete). The Edison collection is inspired by Thomas Edison's great flurry of inventions including the distribution of electrical power. The Edison range offering a comprehensive range of lighting solutions. Using imported Ferrowatt Squirrel cage bulbs they create a stunning Vintage effect and visual warmth that works as dramatic feature lighting. The flush version is the perfect solution for a low ceiling. These lights look fantastic when used in rows.

Wattage: 1 x 40w ES
Height: 290mm / 11.4"
Width: 355mm / 14"
Depth: 355mm / 14"



Edison Single Pendant (Large) (1900-2-P)



Wattage: 1 x 40w ES
Height: 310mm / 12.2"
Width: 355mm / 14"
Depth: 355mm / 14"

Large Edison single pendant solid brass available in Antique Brass or Polished Nickel finish with silk flex. Adjustable height. Static Height adjusts by shortening the cable (Note height to be set on installation then fixed). Shown with LB3 Ferrowatt Tesla lamp (Supplied Complete). The Edison range offering a comprehensive range of lighting solutions. Using imported Ferrowatt Squirrel cage bulbs they create a stunning Vintage effect and visual warmth that works as dramatic feature lighting. The single pendant is designed to highlight counters and kitchen islands creating a vintage feature.

Finishes
Available for
this Collection



N



AB

Included
Bulb



LB3

Finishes Available for this Collection



N



AB

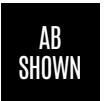
Included Bulb



LB3



Edison 2 Light Pendant (Large) (1900-2-P2)



Large Edison 2 light pendant solid brass available in Polished Nickel or Antique Brass finish with silk flex. Adjustable height. Static Height adjusts by shortening the cable (Note height to be set on installation then fixed). Shown with 2 x LB3 Ferrowatt Tesla lamps (Supplied Complete). The Edison collection is inspired by Thomas Edison's great flurry on inventions including the distribution of electrical power. The Edison range offering a comprehensive range of lighting solutions. Using imported Ferrowatt Squirrel cage bulbs they create a stunning Vintage effect and visual warmth that works as dramatic feature lighting. The multi light versions are ideal for highlighting a kitchen island or bar counter. When dimmed these lights create a feast of visual drama.

Wattage: 2 x 40w ES
Height: Min 280mm / 11"
Max 1180mm / 46.5"
Width: 900mm / 35.4"
Depth: 355mm / 14"



Edison 3 Light Pendant (Large) (1900-2-P3)



Finishes
Available for
this Collection



N



AB

Included
Bulb



LB3

N
SHOWN

Wattage: 3 x 40w ES
Height: Min 280mm / 11"
Max 1180mm / 46.5"
Width: 1080mm / 42.5"
Depth: 355mm / 14"

Large Edison 3 light pendant solid brass available in Antique Brass or Polished Nickel finish with silk flex. Static Height adjusts by shortening the cable (Note height to be set on installation then fixed). Shown with 3 x LB3 Ferrowatt Tesla Filament lamp (Supplied Complete). The Edison collection is inspired by Thomas Edison's great flurry on inventions including the distribution of electrical power. The Edison range offering a comprehensive range of lighting solutions. Using imported Ferrowatt Squirrel cage bulbs they create a stunning Vintage effect and visual warmth that works as dramatic feature lighting. The multi light versions are ideal for highlighting a kitchen island or bar counter. When dimmed these lights create a feast of visual drama.

Finishes
Available for
this Collection



N



AB

Included
Bulb



LB3



Edison Wall Light (Large) (1900-2-W)



AB
SHOWN

Large Edison single wall light. Solid brass available in Antique Brass or Polished Nickel finish. shown with LB3 lamp – (Supplied Complete). The Edison collection is inspired by Thomas Edison's great flurry on inventions including the distribution of electrical power. The Edison range offering a comprehensive range of lighting solutions. Using imported Ferrowatt Squirrel cage bulbs they create a stunning Vintage effect and visual warmth that works as dramatic feature lighting. The single wall light looks fantastic on an exposed brick wall or tied into shabby chic style scheme.

Wattage: 1 x 40w ES
Height: 270mm / 10.6"
Width: 355mm / 14"
Depth: 400mm / 15.7"



Marconi Flexi Wall Multi-Adjustable Light (1900-3-FL)



Finishes
Available for
this Collection



N



AB

Included
Bulb



LB2

N
SHOWN

Wattage: 1 x 40w ES
Height: Min: 140mm / 5.5"
Max: 480mm / 18.9"
Width: Min: 140mm / 5.5"
Max: 480mm / 18.9"
Depth: Min: 220mm / 8.7"
Max: 520mm / 20.5"

The Marconi Flexi Wall multi adjustable light is made of Solid Brass is available in Antique Brass or Polished Nickel Finish, included bulb LB2. The adjustable light uses a machined brass flexi rod adjusts and hold a desired position. Inspired by the great inventor Guglielmo Marconi, as the inventor of the radio telegraph and pioneer of radio technology. The Marconi collection uses a Ferrowatt Squirrel bulb encased in a cast cage. The design re-creates the look of vintage valve radios with sunning effect. The Marconi collection creates a warm vintage feel to any interior space. With multiple options to choose from in both ceiling lights and wall lights. The flexi arm version of this collection is an idea bedside light. Fully adjustable on its solid brass flexi arm, the light can be moved to any desired position.

Finishes
Available for
this Collection



N



AB

Included
Bulb



LB2



Marconi Three Light Cluster (1900-3-C3)



Marconi 3 Light Cluster solid brass available in Polished Nickel or Antique Brass finish with silk flex. Adjustable Height. Static Height adjusts by shortening the cable (Note height to be set on installation then fixed). Shown with 3 x LB2 Ferrowatt Squirrel Cage lamp (Supplied Complete). Inspired by the great inventor Guglielmo Marconi, as the inventor of the radio telegraph and pioneer of radio technology. The Marconi collection uses a Ferrowatt Squirrel bulb encased in a cast cage. The design re-creates the look of vintage valve radios with sunning effect. The Marconi collection creates a warm vintage feel to any interior space. With multiple options to choose from in both ceiling lights and wall lights. The cluster versions look fantastic in a stairwell or over a round table. Used over kitchen island they create a dramatic scene.

Wattage: 3 x 40w ES
Height: Min 370mm / 14.6"
Max 1400mm / 55.1"
Width: 310mm / 12.2"
Depth: 310mm / 12.2"



Marconi Five Light Cluster (1900-3-C5)



Finishes Available for this Collection



N



AB

Included Bulb



LB2

AB
SHOWN

Wattage: 5 x 40w ES
Height: Min 370mm / 14.6"
Max 1400mm / 55.1"
Width: 440mm / 17.3"
Depth: 440mm / 17.3"

Marconi 5 Light Cluster solid brass available in Polished Nickel or Antique Brass finish with silk flex. Adjustable Height. Static Height adjusts by shortening the cable (Note height to be set on installation then fixed). Shown with 5 x LB2 Ferrowatt Squirrel Cage lamps (Supplied Complete). Inspired by the great inventor Guglielmo Marconi, as the inventor of the radio telegraph and pioneer of radio technology. The Marconi collection uses a Ferrowatt Squirrel bulb encased in a cast cage. The design re-creates the look of vintage valve radios with sunning effect. The Marconi collection creates a warm vintage feel to any interior space. With multiple options to choose from in both ceiling lights and wall lights. The cluster versions look fantastic in a stairwell or over a round table. Used over kitchen island they create a dramatic scene.

Finishes
Available for
this Collection



N



AB

Included
Bulb



LB2



Marconi Flush Ceiling Light (1900-3-F)



N
SHOWN

Marconi Flush Ceiling Light made of solid brass available in Polished Nickel and Antique Brass finish. Shown with LB2 Ferrowatt Squirrel Cage lamp (Supplied Complete). Inspired by the great inventor Guglielmo Marconi, as the inventor of the radio telegraph and pioneer of radio technology. The Marconi collection uses a Ferrowatt Squirrel bulb encased in a cast cage. The design re-creates the look of vintage valve radios with sunning effect. The Marconi collection creates a warm vintage feel to any interior space. With multiple options to choose from in both ceiling lights and wall lights. The Flush version is perfect for areas with low ceilings or used in rows to create a feature.

Wattage: 1 x 40w ES
Height: 250mm / 9.8"
Width: 130mm / 5.1"
Depth: 130mm / 5.1"



Marconi Single Pendant (1900-3-P)



Finishes
Available for
this Collection



N



AB

Included
Bulb



LB2



Wattage: 1 x 40w ES
Height: Min 370mm / 14.6"
Max 1400mm / 55.1"
Width: 130mm / 5.1"
Depth: 130mm / 5.1"

Marconi single pendant solid brass available in Polished Nickel and Antique Brass finish with silk flex. Static Height adjusts by shortening the cable (Note height to be set on installation then fixed). Shown with LB2 Ferrowatt Squirrel Cage lamp (Supplied Complete). The Marconi collection uses a Ferrowatt Squirrel bulb encased in a cast cage. The design re-creates the look of vintage valve radios with sunning effect. The Marconi collection creates a warm vintage feel to any interior space. With multiple options to choose from in both ceiling lights and wall lights. The pendant versions are perfect for use over a countertop or long kitchen island. Used alongside dedicated task lighting like recessed downlights, the Marconi pendants are perfect for creating a dramatic effect.

Finishes
Available for
this Collection



N



AB

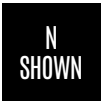
Included
Bulb



LB2



Marconi Three Light Pendant (1900-3-P3)



Marconi 3 light pendant solid brass available in Polished Nickel or Antique Brass finish with silk flex. Static Height adjusts by shortening the cable (Note height to be set on installation then fixed). Shown with 3 x LB2 Ferrowatt Squirrel Cage lamp (Supplied Complete). The Marconi collection uses a Ferrowatt Squirrel bulb encased in a cast cage. The design re-creates the look of vintage valve radios with sunning effect. The Marconi collection creates a warm vintage feel to any interior space. With multiple options to choose from in both ceiling lights and wall lights. The pendant versions are perfect for use over a countertop or long kitchen island. Used alongside dedicated task lighting like recessed downlights, the Marconi pendants are perfect for creating a dramatic effect.

Wattage: 3 x 40w ES
Height: Min 370mm / 14.6"
Max 1400mm / 55.1"
Width: 310mm / 12.2"
Depth: 310mm / 12.2"



Marconi Five Light Pendant (1900-3-P5)



Finishes
Available for
this Collection



N



AB

Included
Bulb



LB2

AB
SHOWN

Wattage: 5 x 40w ES
Height: Min 370mm / 14.6"
Max 1400mm / 55.1"
Width: 440mm / 17.3"
Depth: 440mm / 17.3"

Marconi 5 light pendant solid brass available in Polished Nickel or Antique Brass finish with silk flex. Adjustable height. Static Height adjusts by shortening the cable (Note height to be set on installation then fixed). Shown with 5 x LB2 Ferrowatt Squirrel Cage lamp (Supplied Complete). The Marconi collection uses a Ferrowatt Squirrel bulb encased in a cast cage. The design re-creates the look of vintage valve radios with sunning effect. The Marconi collection creates a warm vintage feel to any interior space. With multiple options to choose from in both ceiling lights and wall lights. The pendant versions are perfect for use over a countertop or long kitchen island. Used alongside dedicated task lighting like recessed downlights, the Marconipendants are perfect for creating a dramatic effect.

Finishes
Available for
this Collection



N



AB

Included
Bulb



LB2



Marconi Wall Light (1900-3-W)



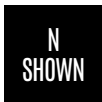
AB
SHOWN

Marconi Wall Light is made of solid brass available in Polished Nickel and Antique Brass finish. Shown with LB2 Ferrowatt Squirrel Cage lamp (Supplied Complete). Inspired by the great inventor Guglielmo Marconi, as the inventor of the radio telegraph and pioneer of radio technology. The Marconi collection uses a Ferrowatt Squirrel bulb encased in a cast cage. The design re-creates the look of vintage valve radios with sunning effect. The Marconi collection creates a warm vintage feel to any interior space. With multiple options to choose from in both ceiling lights and wall lights.

Wattage: 1 x 40w ES
Height: 270mm / 10.6"
Width: 130mm / 5.1"
Depth: 160mm / 6.3"



Marconi Twin Wall/Ceiling Light (1900-3-W2)



Wattage: 1 x 40w ES
Height: 425mm / 16.7"
Width: 130mm / 5.1"
Depth: 140mm / 9.4"

Twin Marconi Wall/Ceiling Light solid brass available in Antique Brass and Polished Nickel finish. Shown with LB2 Squirrel Cage lamp (Supplied Complete). Inspired by the great inventor Guglielmo Marconi, as the inventor of the radio telegraph and pioneer of radio technology. The Marconi collection uses a Ferrowatt Squirrel bulb encased in a cast cage. The design re-creates the look of vintage valve radios with stunning effect. The Marconi collection creates a warm vintage feel to any interior space. With multiple options to choose from in the Marconi collection in both ceiling lights and wall lights, the twin Marconi can be used as either a ceiling light or wall mounted and complemented by any product in the range. With its shallow projection it is ideal for use in narrow spaces such as hallways or alcoves. This light is particularly striking when used in row with multiple units making the wall come alive with glowing light.

Finishes
Available for
this Collection



N



AB

Included
Bulb



LB2

Finishes
Available for
this Collection



N



AB

Included
Bulb



LB2



Marconi Adjustable Wall Or Ceiling Light (1900-3-AW)



N
SHOWN

Marconi Adjustable Wall/Ceiling Light solid brass available in Antique Brass or Polished Nickel finish. Lamp Adjusts through a 150 degree axis. Supplied with LB2 Ferrowatt Squirrel Cage lamp. Inspired by the great inventor Guglielmo Marconi, as the inventor of the radio telegraph and pioneer of radio technology. The Marconi collection uses a Ferrowatt Squirrel bulb encased in a cast cage. The design re-creates the look of vintage valve radios with sunning effect. The Marconi collection creates a warm vintage feel to any interior space. With multiple options to choose from in both ceiling lights and wall lights. The adjustable version can be used for both ceiling and wall mount pivoting on its cast brass banjo joint.

Wattage: 1 x 40w ES
Height: Min 270mm / 10.6"
Max 340mm / 13.4"
Width: 130mm / 5.1"
Depth: Min 170mm / 6.7"
Max 340mm / 13.4"



Marconi Adjustable Drop Wall Light (1900-3-WAD)



Finishes
Available for
this Collection



N



AB

Included
Bulb



LB2

AB
SHOWN

Wattage: 1 x 40w ES
Height: Min 300mm / 11.8"
Max 1100mm / 43.3"
Width: 130mm / 5.1"
Depth: 240mm / 9.4"

Marconi Adjustable Drop Wall Light. Static Height adjusts by shortening the cable (Note height to be set on installation then fixed). Solid brass. Shown with LB2 lamp (Supplied Complete). Inspired by the great inventor Guglielmo Marconi, as the inventor of the radio telegraph and pioneer of radio technology. The Marconi collection uses a Ferrowatt Squirrel bulb encased in a cast cage. The design re-creates the look of vintage valve radios with sunning effect. The Marconi collection creates a warm vintage feel to any interior space. With multiple options to choose from in both ceiling lights and wall lights. The adjustable drop wall light makes an excellent bedside light or can be used in areas with high light point to create a feature wall using light. These lights look fantastic against exposed brick.

Finishes
Available for
this Collection



N



AB

Included
Bulb



LB1



Alexander 3 Light Cluster (1900-4 C3)



AB
SHOWN

Alexander 3 light cluster made of solid brass available in Polished Nickel or Antique Brass finish with silk flex. Adjustable height. Static Height adjusts by shortening the cable (Note height to be set on installation then fixed). Shown with 3 x LB1 Filament Tube lamp (supplied Complete). The Alexander collection was inspired by the great inventor Alexander Graham Bell, whom revolutionised the world with his invention of the telephone amongst many other great revolutions. The Alexander uses a tube encapsulated filament bulb and surrounded by complex cage. Early telephone exchanges were a myriad or complex cables connecting telephone line to telephone line. The Alexander recreates a complex exchange of light reflecting off the designs outer cage. With multiple options to choose from in both ceiling lights and wall lights. The cluster versions look fantastic in a stairwell or over a round table. Used over kitchen island they create a dramatic scene.

Wattage: 3 x 40w ES
Height: Min 400mm / 15.7"
Max 1400mm / 55.1"
Width: 220mm / 8.8"
Depth: 340mm / 13.4"



Alexander 5 Light Cluster (1900-4 C5)



Finishes
Available for
this Collection



N



AB

Included
Bulb



LB1

N
SHOWN

Wattage: 5 x 40w ES
Height: Min 400mm / 15.7"
Max 1400mm / 55.1"
Width: 340mm / 13.4"
Depth: 340mm / 13.4"

Alexander 5 light cluster made of solid brass available in Polished Nickel or Antique Brass finish with silk flex. Adjustable height. Static Height adjusts by shortening the cable (Note height to be set on installation then fixed). Shown with 5 x LB1 Filament Tube lamp (supplied Complete). The Alexander collection was inspired by the great inventor Alexander Graham Bell, whom revolutionised the world with his invention of the telephone amongst many other great revolutions. The Alexander uses a tube encapsulated filament bulb and surrounded by complex cage. Early telephone exchanges were a myriad or complex cables connecting telephone line to telephone line. The Alexander recreates a complex exchange of light reflecting off the designs outer cage. With multiple options to choose from in both ceiling lights and wall lights. The cluster versions look fantastic in a stairwell or over a round table. Used over kitchen island they create a dramatic scene.

Finishes
Available for
this Collection



N



AB

Included
Bulb



LB1



Alexander Flush (1900-4-F)



AB
SHOWN

Alexander Flush Ceiling Light made of solid brass available in Antique Brass or Polished Nickel finish. Shown with LB1 Vintage Filament Tube Lamp (Supplied Complete). The Alexander collection was inspired by the great inventor Alexander Graham Bell, whom revolutionised the world with his invention of the telephone amongst many other great revolutionary inventions. The Alexander uses a tube encapsulated filament bulb and surrounded by complex cage. Early telephone exchanges were a myriad or complex cables connecting telephone line to telephone line. The Alexander recreates a complex exchange of light reflecting off the designs outer cage. With multiple options to choose from in both ceiling lights and wall lights. The Flush version is perfect for areas with low ceilings or used in rows to create a feature.

Wattage: 1 x 40w ES
Height: 350mm / 13.8"
Width: 115mm / 4.5"
Depth: 115mm / 4.5"



Alexander Single Pendant (1900-4-P)



Finishes
Available for
this Collection



N



AB

Included
Bulb



LB1

AB
SHOWN

Wattage: 1 x 40w ES
Height: Min 400mm / 15.7"
Max 1400mm / 55.1"
Width: 110mm / 4.3"
Depth: 110mm / 4.3"

Alexander single pendant solid brass shown in Antique Brass finish with silk flex. Adjustable height. (Note height to be set on installation then fixed). Shown with LB1 lamp (supplied Complete). The Alexander collection was inspired by the great inventor Alexander Graham Bell, whom revolutionised the world with his invention of the telephone amongst many other great revolutionary inventions. The Alexander uses a tube encapsulated filament bulb and surrounded by complex cage. Early telephone exchanges were a myriad or complex cables connecting telephone line to telephone line. The Alexander recreates a complex exchange of light reflecting off the designs outer cage. The pendant versions are perfect for use over a countertop or long kitchen island. Marconi Pendants look particularly dramatic when used in rows.

Finishes
Available for
this Collection



N



AB

Included
Bulb



LB1



Alexander 3 Light Pendant (1900-4-P3)



Alexander 3 light pendant solid brass available in Antique Brass or Polished Nickel finish with silk flex. Adjustable height. (Note height to be set on installation then fixed). Shown with 3 x LB1 Filament tube lamp (supplied Complete). The Alexander collection was inspired by the great inventor Alexander Graham Bell, whom revolutionised the world with his invention of the telephone amongst many other great revolutionary inventions. The Alexander uses a tube encapsulated filament bulb and surrounded by complex cage. Early telephone exchanges were a myriad of complex cables connecting telephone line to telephone line. The Alexander recreates a complex exchange of light reflecting off the designs outer cage. The pendant versions are perfect for use over a countertop or long kitchen island. Used alongside dedicated task lighting like recessed downlights, the Marconi pendants are perfect for creating a dramatic effect.

Wattage: 3 x 40w ES
Height: Min 400mm / 15.7"
Max 1400mm / 55.1"
Width: 610mm / 24"
Depth: 120mm / 4.7"



Alexander 5 Light Pendant (1900-4-P5)



Finishes
Available for
this Collection



N



AB

Included
Bulb



LB1

AB
SHOWN

Wattage: 5 x 40w ES
Height: Min 400mm / 15.7"
Max 1400mm / 55.1"
Width: 920mm / 36.2"
Depth: 120mm / 4.7"

Alexander 5 light pendant solid brass available in Antique Brass or Polished Nickel finish with silk flex. Adjustable height. Note height to be set on installation then fixed). Shown with 5 x LB1 lamp (supplied Complete). The Alexander collection was inspired by the great inventor Alexander Graham Bell, whom revolutionised the world with his invention of the telephone amongst many other great revolutionary inventions. The Alexander uses a tube encapsulated filament bulb and surrounded by complex cage. Early telephone exchanges were a myriad or complex cables connecting telephone line to telephone line. The Alexander recreates a complex exchange of light reflecting off the designs outer cage. The pendant versions are perfect for use over a countertop or long kitchen island. Used alongside dedicated task lighting like recessed downlights, the Marconi pendants are perfect for creating a dramatic effect.

Finishes
Available for
this Collection



N



AB

Included
Bulb



LB1



Alexander Wall Light (1900-4-W)



N
SHOWN

Alexander Wall Light solid brass Available in Polished Nickel or Antique Brass finish. Shown with LB1 Vintage Filament Tube Lamp, (supplied Complete). The Alexander collection was inspired by the great inventor Alexander Graham Bell, whom revolutionised the world with his invention of the telephone amongst many other great revolutionary inventions. The Alexander uses a tube encapsulated filament bulb and surrounded by complex cage. Early telephone exchanges were a myriad or complex cables connecting telephone line to telephone line. The Alexander recreates a complex exchange of light reflecting off the designs outer cage. With several matching pendants and wall lights the Alexander wall light can be used as a standalone wall light very well suited as a bedside light or highlighting a wall space or as part of a bigger scheme. Its shallow projection makes is extremely versatile.

Wattage: 1 x 40w ES
Height: 355mm / 14"
Width: 115mm / 4.5"
Depth: 145mm / 5.7"



Alexander Twin Wall/Ceiling Light (1900-4-W2)



Finishes
Available for
this Collection



N



AB

Included
Bulb



LB1

AB
SHOWN

Wattage: 2 x 40w ES
Height: 625mm / 24.6"
Width: 110mm / 4.3"
Depth: 115mm / 4.5"

Alexander Double Wall/Ceiling Light solid brass available in Antique Brass or Polished Nickel finish. Shown with LB1 Vintage Tube Lamp (Supplied Complete). The Alexander collection was inspired by the great inventor Alexander Graham Bell, whom revolutionised the world with his invention of the telephone amongst many other great revolutionary inventions. The Alexander uses a tube encapsulated filament bulb and surrounded by complex cage. Early telephone exchanges were a myriad or complex cables connecting telephone line to telephone line. The Alexander recreates a complex exchange of light reflecting off the designs outer cage. The twin Alexander wall light can be used as either a ceiling light or wall mounted and complemented by any product in the range. With its shallow projection it is ideal for use in narrow spaces such as hallways or alcoves. This light is particularly striking when used in row with multiple units making the wall come alive with glowing light.

Finishes
Available for
this Collection



N



AB

Included
Bulb



LB1



Alexander Adjustable Wall/Ceiling Light (1900-4-WA)



N
SHOWN

Alexander Adjustable Wall/Ceiling Light made of solid brass available in Polished Nickel or Antique Brass finish. Lamp Adjusts through a 150 degree axis. Shown with LB1 Vintage Tube Lamp (Supplied Complete). The Alexander collection was inspired by the great inventor Alexander Graham Bell, whom revolutionised the world with his invention of the telephone amongst many other great revolutions. The Alexander uses a tube encapsulated filament bulb and surrounded by complex cage. Early telephone exchanges were a myriad of complex cables connecting telephone line to telephone line. The Alexander recreates a complex exchange of light reflecting off the designs outer cage. The Alexander Adjustable Wall/Ceiling Light can be adjusted throughout its axis, making it an ideal bedside light or unused in multiples at different angles to create diverse lighting effects.

Wattage: 1 x 40w ES
Height: Min 110mm / 4.3"
Max 270mm / 10.6"
Width: 110mm / 4.3"
Depth: Min 155mm / 6.1"
Max 450mm / 17.7"



Alexander Adjustable Drop Wall Light (1900-4-WAD)



Finishes
Available for
this Collection



N



AB

Included
Bulb



LB1

AB
SHOWN

Wattage: 1 x 40w ES
Height: Min 400mm / 15.7"
Max 1200mm / 47.2"
Width: 100mm / 3.9"
Depth: 210mm / 8.3"

Alexander Adjustable Drop Wall Light. Static Height adjusts by shortening the cable (Note height to be set on installation then fixed). Solid brass available in Polished Nickel or Antique Brass finish. Shown with LB1 Vintage Tube Lamp (supplied Complete). The Alexander collection was inspired by the great inventor Alexander Graham Bell, whom revolutionised the world with his invention of the telephone amongst many other great revolutions. The Alexander uses a tube encapsulated filament bulb and surrounded by complex cage. Early telephone exchanges were a myriad or complex cables connecting telephone line to telephone line. The Alexander recreates a complex exchange of light reflecting off the designs outer cage. Available in a complete range of hanging wall and ceiling lights the choice allows you to create and mix an exciting lighting scheme.

Finishes
Available for
this Collection



N



AB

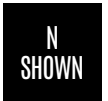
Included
Bulb



LB1



Alexander Flexi Wall Multi-Adjustable Light (1900-4-FL)



The Alexander Flexi Wall multi adjustable Light is made of Solid Brass and is available in Antique Brass or Polished Nickel Finish. (Shown with LB1 Ferrowatt Filament Tube bulb) supplied complete. Multi Adjustable the machined brass flexi rod adjusts and hold a desired position.). The Alexander collection was inspired by the great inventor Alexander Graham Bell, whom revolutionised the world with his invention of the telephone amongst many other great revolutionary inventions. The Alexander uses a tube encapsulated filament bulb and surrounded by complex cage. Early telephone exchanges were a myriad or complex cables cables connecting telephone line to telephone line. The Alexander recreates a complex exchange of light reflecting off the designs outer cage. With multiple options to choose from in both ceiling lights and wall lights. The flexi arm version of this collection is an idea bedside light. Fully adjustable on its solid brass flexi arm, the light can be moved to any desired position.

Wattage: 1 x 40w ES
Height: Min 170mm / 6.7"
Max 500mm / 19.7"
Width: Min 110mm / 4.3"
Max 500mm / 19.7"
Depth: Min 170mm / 6.7"
Max 520mm / 20.5"



Tommy 3 Light Cluster (1900-5-C3)



Finishes
Available for
this Collection



N



AB

Included
Bulb



LB3

AB
SHOWN

Wattage: 3 x 40w ES
Height: Min 160mm / 6.3"
Max 1240mm / 48.8"
Width: 220mm / 8.7"
Depth: 220mm / 8.7"

Tommy 3 Light Cluster solid brass available in Antique Brass or Polished Nickel finish. Note height to be set on installation then fixed). Shown with 3 x LB3 Ferrowatt Tesla lamp (Supplied Complete). The Tommy Collection is named after the World War one British trench soldier. These soldiers were made to dig trenches and make temporary surroundings into working strongholds. This collection of lighting is modelled upon early electric lights used in that period. Very simple in design with a contemporary twist. They use a Tesla style bulb to create a vintage scene. Available in a complete range of hanging wall and ceiling lights the choice allows you to create and mix a exciting lighting scheme. The cluster versions look fantastic in a stairwell over a round table. Used over kitchen island they create a dramatic scene.

Finishes
Available for
this Collection



N



AB

Included
Bulb



LB3



Tommy 5 Light Cluster (1900-5-C5)



N
SHOWN

Tommy 5 Light Cluster solid brass available in Antique Brass or Polished Nickel finish. Adjustable Height. Note height to be set on installation then fixed). Shown with 5 x LB3 Ferrowatt Tesla lamp (Supplied Complete). The Tommy Collection is named after the World War one British trench soldier. These soldiers were made to dig trenches and make temporary surroundings into working strongholds. This collection of lighting is modelled upon early electric lights used in that period. Very simple in design with a contemporary twist. They use a Tesla style bulb to create a vintage scene. Available in a complete range of hanging wall and ceiling lights the choice allows you to create and mix a exciting lighting scheme. The cluster versions look fantastic in a stairwell or over a round table. Used over kitchen island they create a dramatic scene.

Wattage: 5 x 40w ES
Height: Min 160mm / 6.3"
Max 1240mm / 48.8"
Width: 350mm / 13.8"
Depth: 350mm / 13.8"



Tommy Flush Ceiling Light (1900-5-F)



Finishes
Available for
this Collection



N



AB

Included
Bulb



LB3

N
SHOWN

Wattage: 1 x 40w ES
Height: 210mm / 8.3"
Width: 130mm / 5.1"
Depth: 130mm / 5.1"

Tommy Flush Ceiling Light. Solid brass available in Antique Brass or Polished Nickel finish. Shown with LB3 Ferrowatt Tesla Cage lamp (supplied complete). The Tommy Collection is named after the World War one British trench soldier. These soldiers were made to dig trenches and make temporary surroundings into working strongholds. This collection of lighting is modelled upon early electric lights used in that period. Very simple in design with a contemporary twist. They use a Tesla style bulb to create a vintage scene. Available in a complete range of hanging wall and ceiling lights the choice allows you to create and mix a exciting lighting scheme. The flush versions is ideal for use in areas with low ceilings or used in rows to create stunning ceiling effects.

Finishes
Available for
this Collection



N



AB

Included
Bulb



LB3



Tommy Flexi Wall multi adjustable Light (1900-5-FL)



AB
SHOWN

The Tommy Flexi Wall multi adjustable Light is made of Solid Brass is available in Antique Brass (Shown) or Polished Nickel Finish. (Shown with LB3 Ferrowatt Tesla Filament Bulb) supplied complete. The light is multi adjustable the machined brass flexi rod adjusts and hold a desired position. The Tommy Collection is named after the World War one British trench soldier. These soldiers were made to dig trenches and make temporary surroundings into working strongholds. This collection of lighting is modelled upon early electric lights used in that period. Very simple in design with a contemporary twist. They use a Tesla style bulb to create a vintage scene. The flexi arm version of this collection is an idea bedside light. Fully adjustable on its solid brass flexi arm, the light can be moved to any desired position.

Wattage: 1 x 40w ES
Height: Min 120mm / 4.7"
Max 420mm / 16.5"
Width: Min 110mm / 4.3"
Max 420mm / 16.5"
Depth: Min 190mm / 7.5"
Max 450mm / 17.7"



Tommy Single Pendant (1900-5-P)



Finishes
Available for
this Collection



N



AB

Included
Bulb



LB3

N
SHOWN

Wattage: 1 x 40w ES
Height: Min 290mm / 11.4"
Max 1280mm / 50.4"
Width: 130mm / 5.1"
Depth: 130mm / 5.1"

Tommy Single Pendant solid brass available in Polished Nickel or Antique Brass finish. Note height to be set on installation then fixed). Shown with 1 x LB3 Vintage Tesla Lamp (Supplied Complete). The Tommy Collection is named after the World War one British trench soldier. These soldiers were made to dig trenches and make temporary surroundings into working strongholds. This collection of lighting is modelled upon early electric lights used in that period. Very simple in design with a contemporary twist. They use a Tesla style bulb to create a vintage scene. Available in a complete range of hanging wall and ceiling lights the choice allows you to create and mix a exciting lighting scheme. The pendant versions are perfect for use over a countertop or long kitchen island. Tommy Pendants look particularly dramatic when used in rows.

Finishes
Available for
this Collection



N



AB

Included
Bulb



LB3



Tommy Light Pendant (1900-5-P3)



Tommy 3 Light Pendant solid brass available in Polished Nickel or Antique Brass finish. Note height to be set on installation then fixed). Shown with 3 x LB3 Ferrowatt Tesla lamp (Supplied Complete). The Tommy Collection is named after the World War one British trench soldier. These soldiers were made to dig trenches and make temporary surroundings into working strongholds. This collection of lighting is modelled upon early electric lights used in that period. Very simple in design with a contemporary twist. They use a Tesla style bulb to create a vintage scene. Available in a complete range of hanging wall and ceiling lights the choice allows you to create and mix a exciting lighting scheme. The pendant versions are perfect for use over a countertop or long kitchen island. Tommy Pendants look particularly dramatic when used in rows.

Wattage: 3 x 40w ES
Height: Min 160mm / 6.3"
Max 1240mm / 48.8"
Width: 600mm / 23.6"
Depth: 130mm / 5.1"



Tommy 5 Light Pendant (1900-5-P5)



Finishes
Available for
this Collection



N



AB

Included
Bulb



LB3

N
SHOWN

Wattage: 5 x 40w ES
Height: Min 160mm / 6.3"
Max 1240mm / 48.8"
Width: 930mm / 36.6"
Depth: 130mm / 5.1"

Tommy 5 Light Pendant solid brass available in Polished Nickel or Antique Brass finish. Note height to be set on installation then fixed). NOTE: (Supplied Complete with 5 x LB3 Ferrowatt Tesla Lamps as standard). The Tommy Collection is named after the World War one British trench soldier. These soldiers were made to dig trenches and make temporary surroundings into working strongholds. This collection of lighting is modelled upon early electric lights used in that period. Very simple in design with a contemporary twist. They use a Tesla style bulb to create a vintage scene. Available in a complete range of hanging wall and ceiling lights the choice allows you to create and mix a exciting lighting scheme. The pendant versions are perfect for use over a countertop or long kitchen island. Tommy Pendants look particularly dramatic when used in rows.

Finishes
Available for
this Collection



N



AB

Included
Bulb



LB3



Tommy fixed Wall Light (1900-5-W)



AB
SHOWN

Tommy fixed Wall Light. Solid brass available in Antique Brass or Polished Nickel finish. Shown with LB3 Ferrowatt Tesla Cage lamp (supplied complete). The Tommy Collection is named after the World War one British trench soldier. These soldiers were made to dig trenches and make temporary surroundings into working strongholds. This collection of lighting is modelled upon early electric lights used in that period. Very simple in design with a contemporary twist. They use a Tesla style bulb to create a vintage scene. Available in a complete range of hanging wall and ceiling lights the choice allows you to create and mix a exciting lighting scheme.

Wattage: 1 x 40w ES
Height: 230mm / 9.1"
Width: 130mm / 5.1"
Depth: 180mm / 7.1"



Tommy Double Wall or Ceiling Light (1900-5-W2)



Finishes
Available for
this Collection



N



AB

Included
Bulb



LB3

AB
SHOWN

Wattage: 2 x 40w ES
Height: 305mm / 12"
Width: 130mm / 5.1"
Depth: 150mm / 5.9"

Tommy Double Wall/Ceiling Light. Solid brass available in Polished Nickel or Antique Brass finish. Shown with 2 x LB3 Ferrowatt Tesla lamps (supplied complete). The Tommy Collection is named after the World War one British trench soldier. These soldiers were made to dig trenches and make temporary surroundings into working strongholds. This collection of lighting is modelled upon early electric lights used in that period. Very simple in design with a contemporary twist. They use a Tesla style bulb to create a vintage scene. Available in a complete range of hanging wall and ceiling lights the choice allows you to create and mix an exciting lighting scheme. The twin Tommy wall light can be used as either a ceiling light or wall mounted and complemented by any product in the range. With its shallow projection it is ideal for use in narrow spaces such as hallways or alcoves. This light is particularly striking when used in row with multiple units making the wall come alive with glowing light.

Finishes
Available for
this Collection



N



AB

Included
Bulb



LB3



Tommy Adjustable Wall or Ceiling Light (1900-5-AW)



N
SHOWN

Tommy Adjustable Wall/Ceiling Light. The Lamp adjusts through 150 degrees for ceiling or wall use. Solid brass available in Polished Nickel or Antique Brass finish. Shown with LB3 Vintage Tesla Lamp (supplied complete). The Tommy Collection is named after the World War one British trench soldier. These soldiers were made to dig trenches and make temporary surroundings into working strongholds. This collection of lighting is modelled upon early electric lights used in that period. Very simple in design with a contemporary twist. They use a Tesla style bulb to create a vintage scene. Available in a complete range of hanging wall and ceiling lights the choice allows you to create and mix an exciting lighting scheme.

Wattage: 1 x 40w ES
Height: 270mm / 10.6"
Width: 130mm / 5.1"
Depth: Min 170mm / 6.7"-
Max 310mm / 12.2"



Tommy Adjustable Drop Wall Light (1900-5-WAD)



Finishes
Available for
this Collection



N



AB

Included
Bulb



LB3

AB
SHOWN

Wattage: 1 x 40w ES
Height: Min 270mm / 10.6"
Max 1270mm / 50"
Width: 130mm / 5.1"
Depth: 235mm / 9.3"

Tommy Adjustable Drop Wall Light. Static Height adjusts by shortening the cable. Note height to be set on installation then fixed). Solid brass available in Polished Nickel or Antique Brass finish. Shown with LB3 Ferrowatt Tesla lamp (Supplied Complete). The Tommy Collection is named after the World War one British trench soldier. These soldiers were made to dig trenches and make temporary surroundings into working strongholds. This collection of lighting is modelled upon early electric lights used in that period. Very simple in design with a contemporary twist. They use a Tesla style bulb to create a vintage scene. Available in a complete range of hanging wall and ceiling lights the choice allows you to create and mix a exciting lighting scheme.

Finishes
Available for
this Collection



N



AB

Included
Bulb



LB4



Map Room 3 Light Cluster (1900-6-C3)



AB
SHOWN

The Map Room 3 Light Cluster is made of solid brass and available in Polished Nickel or Antique Brass. The silk vintage flex is adjustable in height. Static Height adjusts by shortening the cable (Note height to be set on installation then fixed). Shown with 3 x LB4 GU10 LED Dimmable lamp (supplied complete). Our Map Room Collection are made to re-create the look of lighting used in map rooms of ships and working war rooms of world war 2. Specific for task lighting we use dimmable warm white LED bulbs that are shrouded by conical shades to create excellent task lighting. Because of the focused spread of shrouded light they are excellent for highlighting areas. With a large range of wall lights and pendants they are fantastic for highlighting tables and walls or featuring spaces such as countertops. The cluster versions look fantastic in a stairwell or over a round table. Used over kitchen island they create a dramatic scene.

Wattage: 3 x 35w GU10
Height: Min 240mm / 9.4"
Max 1260mm / 49.6"
Width: 370mm / 14.6"
Depth: 370mm / 14.6"



Map Room 5 Light Cluster (1900-6-C5)



Finishes
Available for
this Collection



N



AB

Included
Bulb



LB4

N
SHOWN

Wattage: 5 x 35w GU10
Height: Min 240mm / 9.4"
Max 1260mm / 49.6"
Width: 500mm / 19.7"
Depth: 500mm / 19.7"

The Map Room 5 Light Cluster is made solid brass with vintage silk flex is available in Polished Nickel or Antique Brass finish. Adjustable Height Static Height adjusts by shortening the cable (Note height to be set on installation then fixed). Shown with 5 x LB4 GU10 LED Dimmable lamp (supplied complete). Our Map Room Collection are made to re-create the look of lighting used in map rooms of ships and working war rooms of world war 2. Specific for task lighting we use dimmable warm white LED bulbs that are shrouded by conical shades to create excellent task lighting. Because of the focused spread of shrouded light they are excellent for highlighting areas. With a large range of wall lights and pendants they are fantastic for highlighting tables and walls or featuring spaces such as countertops. The cluster versions look fantastic in a stairwell or over a round table. Used over kitchen island they create a dramatic scene.

Finishes
Available for
this Collection



N



AB

Included
Bulb



LB4



Map Room Single Adjustable Wall Light (1900-6-ASW)



N
SHOWN

Map Room Single Adjustable Wall Light made of solid brass. Available in Antique Brass or Polished Nickel finish. Our Map Room Collection are made to re-create the look of lighting used in map rooms of ships and working war rooms of world war 2. Specific for task lighting we use dimmable warm white LED bulbs that are shrouded by conical shades to create excellent task lighting. Because of the focused spread of shrouded light they are excellent for highlighting areas. With a large range of wall lights and pendants they are fantastic for highlighting tables and walls or featuring spaces such as countertops. This small wall light is a simple task lighting solution for intimate space. The Map Room Double Adjustable Wall Lamp Adjusts through a 150 degree axis at Two points. Shown with GU10 LED Dimmable lamp (supplied complete). Ideal for bedrooms or reading areas where a vintage style is being adopted.

Wattage: 1 x 35w GU10
Height: Min 140mm / 5.5"
Max 370mm / 14.6"
Width: 130mm / 5.1"
Depth: Min 220mm / 8.7"
Max 350mm / 13.8"



Map Room Double Adjustable Wall Light (1900-6-ADW)



Finishes
Available for
this Collection



N



AB

Included
Bulb



LB4

AB
SHOWN

Wattage: 1 x 35w GU10
Height: Min 125mm / 4.9"
Max 500mm / 19.7"
Width: 130mm / 5.1"
Depth: Min 310mm / 12.2"
Max 540mm / 21.3"

Map Room Double Adjustable Wall Light made of solid brass available in Polished Nickel or Antique Brass finish. Our Map Room Collection are made to re-create the look of lighting used in map rooms of ships and working war rooms of world war 2. Specific for task lighting we use dimmable warm white LED bulbs that are shrouded by conical shades to create excellent task lighting. Because of the focused spread of shrouded light they are excellent for highlighting areas. With a large range of wall lights and pendants they are fantastic for highlighting tables and walls or featuring spaces such as countertops. This small wall light is a simple task lighting solution for intimate space. The Map Room Double Adjustable Wall Light adjusts through a 150 degree axis at Three points. Shown with GU10 LED Dimmable lamp (supplied complete). Ideal for bedrooms or reading areas where a vintage style is being adopted.

Finishes
Available for
this Collection



N



AB

Included
Bulb



LB4



Map Room Flush Ceiling Light (1900-6-F)



N
SHOWN

Map Room Flush Ceiling Light made of solid brass available in Polished Nickel and Antique Brass finish. Shown with GU10 LED Dimmable lamp (supplied complete). This light is perfect for small space with low ceiling where an intimate atmosphere is desired. Our Map Room Collection are made to re-create the look of lighting used in map rooms of ships and working war rooms of world war 2. Specific for task lighting we use dimmable warm white LED bulbs that are shrouded by conical shades to create excellent task lighting. Because of the focused spread of shrouded light they are excellent for highlighting areas.

Wattage: 1 x 35w GU10
Height: 255mm / 10"
Width: 210mm / 8.3"
Depth: 210mm / 8.3"



Map Room Single Pendant (1900-6-P)



Wattage: 1 x 35w GU10
Height: Min 240mm / 9.4"
Max 1260mm / 49.6"
Width: 210mm / 8.3"
Depth: 220mm / 8.7"

Map Room Single Pendant made of solid brass with vintage silk flex. Available in Polished Nickel or Antique Brass finish. Static Height adjusts by shortening the cable (Note height to be set on installation then fixed). Shown with GU10 LED Dimmable lamp (supplied complete). Our Map Room Collection are made to re-create the look of lighting used in map rooms of ships and working war rooms of world war 2. Specific for task lighting we use dimmable warm white LED bulbs that are shrouded by conical shades to create excellent task lighting. Because of the focused spread of shrouded light they are excellent for highlighting areas. With a large range of wall lights and pendants they are fantastic for highlighting tables and walls or featuring spaces such as countertops.

Finishes
Available for
this Collection



N



AB

Included
Bulb



LB4

Finishes Available for this Collection



N



AB

Included Bulb



LB4



Map Room 3 Light Pendant (1900-6-P3)



**AB
SHOWN**

The Map Room 3 Light Pendant is made solid brass with vintage silk flex is available in Polished Nickel or Antique Brass finish. Adjustable Height Static Height adjusts by shortening the cable (Note height to be set on installation then fixed). Shown with 3 x LB4 GU10 LED Dimmable lamp (supplied complete). Our Map Room Collection are made to re-create the look of lighting used in map rooms of ships and working war rooms of world war 2. Specific for task lighting we use dimmable warm white LED bulbs that are shrouded by conical shades to create excellent task lighting. Because of the focused spread of shrouded light they are excellent for highlighting areas. With a large range of wall lights and pendants they are fantastic for highlighting tables and walls or featuring spaces such as countertops. The bat mounted pendant versions allow for multiple lights from a single light point.

Wattage: 3 x 35w GU10
Height: Min 240mm / 9.4"
Max 1260mm / 49.6"
Width: 740mm / 29.1"
Depth: 220mm / 8.7"



Map Room 5 Light Pendant (1900-6-P5)



Finishes Available for this Collection



N



AB

Included Bulb



LB4

N
SHOWN

Wattage: 5 x 35w GU10
Height: Min 240mm / 9.4"
Max 1260mm / 49.6"
Width: 1040mm / 40.9"
Depth: 220mm / 8.7"

The Map Room 5 Light Pendant is made solid brass with vintage silk flex is available in Polished Nickel or Antique Brass finish. Adjustable Height Static Height adjusts by shortening the cable (Note height to be set on installation then fixed). Shown with 5 x LB4 GU10 LED Dimmable lamp (supplied complete). Our Map Room Collection are made to re-create the look of lighting used in map rooms of ships and working war rooms of world war 2. Specific for task lighting we use dimmable warm white LED bulbs that are shrouded by conical shades to create excellent task lighting. Because of the focused spread of shrouded light they are excellent for highlighting areas. With a large range of wall lights and pendants they are fantastic for highlighting tables and walls or featuring spaces such as countertops. The bar mounted pendant versions allow for multiple lights from a single light point.

Finishes
Available for
this Collection



N



AB

Included
Bulb



LB4



Map Room Adjustable Wall/Ceiling Light (1900-6-AW)



AB
SHOWN

Map Room Adjustable Wall/Ceiling Light. The shade adjusts through 150 degrees for ceiling or wall use. Solid brass available in Polished Nickel or Antique Brass Finish. Shown with LB4 – GU10 LED Dimmable lamp (supplied complete). Our Map Room Collection are made to re-create the look of lighting used in map rooms of ships and working war rooms of world war 2. Specific for task lighting we use dimmable warm white LED bulbs that are shrouded by conical shades to create excellent task lighting. Because of the focused spread of shrouded light they are excellent for highlighting areas. With a large range of wall lights and pendants they are fantastic for highlighting tables and walls or featuring spaces such as countertops. This small wall light is a simple task lighting solution for intimate space. This light can be used as a spot light or wall light, perfect for either side of bed as a reading lamp.

Wattage: 1 x 35w GU10
Height: 170mm / 6.7"
Width: 130mm / 5.1"
Depth: 230mm / 9.1"



Map Room Adjustable Drop Wall Light (1900-6-WAD)



Finishes
Available for
this Collection



N



AB

Included
Bulb



LB4

AB
SHOWN

Wattage: 1 x 35w GU10
Height: Min 270mm / 10.6"
Max 1270mm / 50"
Width: 210mm / 8.3"
Depth: 300mm / 11.8"

Map Room Adjustable Drop Wall Light. Static Height adjusts by shortening the cable (Note height to be set on installation then fixed). Made of solid brass with vintage silk braided flex and available in Polished Nickel and Antique Brass finish. Shown with GU10 LED Dimmable lamp (supplied complete). Our Map Room Collection are made to re-create the look of lighting used in map rooms of ships and working war rooms of world war 2. Specific for task lighting we use dimmable warm white LED bulbs that are shrouded by conical shades to create excellent task lighting. The adjustable drop wall light makes an excellent bedside light or can used in areas with high light point to create a feature wall using light.

Finishes
Available for
this Collection



N



AB

Included
Bulb



LB4



Map Room Wall Light (Small) (1900-6-WS)



AB
SHOWN

Small Map Room Wall Light. Made of solid brass available in Antique Brass or Polished Nickel finish. Shown with GU10 LED Dimmable lamp (supplied complete). With its very low energy use it is ideal for task lighting or highlighting a space. Our Map Room Collection are made to re-create the look of lighting used in map rooms of ships and working war rooms of world war 2. Specific for task lighting we use dimmable warm white LED bulbs that are shrouded by conical shades to create excellent task lighting. Because of the focused spread of shrouded light they are excellent for highlighting areas. With a large range of wall lights and pendants they are fantastic for highlighting tables and walls or featuring spaces such as countertops. This small wall light is a simple task lighting solution for intimate space.

Wattage: 3 x 35w GU10
Height: 140mm / 5.5"
Width: 130mm / 5.1"
Depth: 170mm / 6.7"



Map Room Wall Light (Large) (1900-6-WL)



Finishes
Available for
this Collection



N



AB

Included
Bulb



LB4

N
SHOWN

Wattage: 5 x 35w GU10
Height: 240mm / 9.4"
Width: 210mm / 8.3"
Depth: 270mm / 10.6"

Large Map Room Wall Light. Solid brass available in Polished Nickel or Antique Brass finish. Shown with GU10 LED Dimmable lamp (supplied complete). Our Map Room Collection are made to re-create the look of lighting used in map rooms of ships and working war rooms of world war 2. Specific for task lighting we use dimmable warm white LED bulbs that are shrouded by conical shades to create excellent task lighting. Because of the focused spread of shrouded light they are excellent for highlighting areas. With a large range or wall lights and pendants they are fantastic for highlighting tables and walls or featuring spaces such as countertops. Ideal for over a beside table or highlighting walls.

Finishes
Available for
this Collection



N



AB

Included
Bulb



LB4



Map Room Flexi Wall Multi Adjustable Light (1900-6-FL)



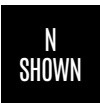
N
SHOWN

The Map Room Flexi Wall multi adjustable Light is made of Solid Brass is available in Antique Brass or Polished Nickel Finish, (Supplied complete with LB4 Osram 5.3W warm white dimmable LED spot lamp). Our Map Room Collection are made to re-create the look of lighting used in map rooms of ships and working war rooms of world war 2. Specific for task lighting we use dimmable warm white LED bulbs that are shrouded by conical shades to create excellent task lighting. Because of the focussed spread of shrouded light they are excellent for highlighting areas. With a large range of wall lights and pendants they are fantastic for highlighting tables and walls or featuring spaces such as countertops. The flexi version makes an excellent wall light for reading or as wall mounted bedside lamps.

Wattage: 1 x 35w GU10
Height: Min 130mm / 5.1"
Max 360mm / 14.2"
Width: Min 130mm / 5.1"
Max 360mm / 14.2"
Depth: Min 180mm / 7.1"
Max 390mm / 15.4"



Engineer Wall Lantern (Small) (1900-7-WS)



Wattage: 1 x 40w ES
Height: 285mm / 11.2"
Width: 100mm / 3.9"
Depth: 120mm / 4.7"

Small Engineer Wall Lantern in Solid brass available in Antique Brass for Polished Nickel Finish. Suitable for outside use in Zone 2 (above 1.2m from the ground Covered Location) Rated IP23 Rain Water Only Shown with LB2 lamp (supplied complete).

Finishes
Available for
this Collection



N



AB

Included
Bulb



LB2

Finishes Available for this Collection



N



AB

Included Bulb



LB1



Engineer Wall Lantern (Large) (1900-7-WL)



AB
SHOWN

Large Engineer Wall Lantern made of solid brass available in Polished Nickel or Antique Brass finish. Suitable for outside use in covered areas over 1m from the ground. These simple box lanterns look fantastic either inside or outside in a covered space. The filament ferrowatt bulb providing a lovely warm glow.

Wattage: 1 x 40w ES
Height: 385mm / 15.2"
Width: 100mm / 3.9"
Depth: 120mm / 4.7"



Downloads



www.limehouselighting.com/brochure-



US Customers



www.limehouselighting.co.uk/brochure-



UK/EU Customers

View other available brochures / order finish samples





Terms & Conditions

Definitions

- 1.1 "The company"-means The Limehouse Lamp Company Limited
- 1.2 "The customer"-means the customer to the company, whether an individual, partnership, a company or their servants or agents.
- 1.3 "The Contract"-means any contract for sale of goods by the company to the customer.
- 1.4 "The Goods"- means any goods which the Company supplies in accordance with these conditions including parts and components of or materials incorporated in them.

Existence of Contract

- 2.1 These conditions shall be incorporated in the contract to the exclusion of any terms or conditions stipulated or referred to by the Customer.
- 2.2 The conditions printed on the price list, from time to time, will be incorporated in the Contract in addition to the conditions herein.
- 2.3 No variations or amendments of this contract shall be binding on the company unless confirmed by it in writing.

Prices

- 3.1 The price of the goods shall be subject to VAT at the prevailing rate and the company shall have the right to adjust its prices for any increase in any costs of any kind arising for any reason after the contract date.
- 3.2 Carriage will be charged in accordance with the Company's terms and conditions of business printed on the company's price lists from time to time.

Payment

- 4.1 All invoices are payable nett within 30 days of the date of the Company's invoice and the customer shall pay interest on any overdue amount from the date on which payment was due to that on which payment it is made (whether before or after judgment) on a daily basis at a rate of 4% per annum over the base rate from time to time quoted by HSBC Bank PLC and reimburse to the company any all costs

and expenses (including legal costs) incurred in the collection of any overdue amount.

Title

- 5.1 Notwithstanding the earlier passing of risk the Company shall remain sole absolute owner of the Goods until such time as the agreed price of the Goods shall have been paid to the Company by the Customer. Until such time the Customer shall be the bailee of the Goods for the Company
- 5.2 The Company shall be entitled at any time before title passes to repossess and dismantle (without being liable for any damage by doing so) all or any of the Goods and for that purpose enter any premises of the Customer.
- 5.3 If a receiver or manager or any other person acting for the customer fails to return any Goods the property of the Company, the return of which has been demanded in accordance with these conditions, he shall pay the Company as agreed and liquidated damages for detainue and/or conversion, treble the agreed price of the Goods.

Risk and Delivery

- 6.1 Goods are delivered to the Customer when the company makes them available to the customer or any agent of the Customer or any carrier (who shall be the customer's agent whoever pays his charges) at the Company's premises or other delivery point agreed by the Company and risk in the goods passes when the goods are delivered to the customer.
- 6.2 The Company shall not be liable for any penalty loss injury damage or expense arising from the delay in delivery or performance from any cause at all nor shall any such delay or failure entitle the customer to refuse to accept any delivery or performance of or repudiate the Contract.
- 6.3 Any dates quoted by the Company for delivery of the Goods are approximate only and shall not form part of the Contract and the Customer acknowledges that in the performance expected of the Company no regard has been paid to any quoted delivery dates.
- 6.4 If the Customer fails to take delivery of the Goods or any part of them on the due date and

fails to provide any instructions documents licenses consents or authorisations required to enable the Goods to be delivered on the due date, the Company shall be entitled upon giving written notice to the Customer to store or arrange for the storage of Goods, and then risk in the goods shall pass to the customer delivery shall be deemed to have taken place and the Customer shall pay the Company all costs and expenses including storage and insurance charges arising from its failure.

Claims Notification

- 7.1 Any claim for non-delivery of any Goods shall be notified in writing by the customer to the company within 10 days of date of the Companies invoice.
- 7.2 Any claim that any Goods have been delivered damaged or not of correct quantity or do not comply with their description shall be notified by the Customer to the Company within 7 days of their delivery.
- 7.3 Any alleged defect shall be notified by the Customer in writing within 7 days of delivery of the Goods or in the case of any defect which is not reasonably apparent on inspection within 7 days of the defect coming to the Customers attention and in any event within one month from the date of delivery.
- 7.4 The Company shall have no liability with regard to any claim in respect of which the Customer has not complied with the provisions of this condition.

Scope of Contract

- 8.1 Under no circumstances shall the Company have any liability of whatever kind for:
- 8.2 Any defects resulting from wear and tear accident improper use by the Customer or use by the Customer otherwise than in accordance with the instructions or advice of the Company or the manufacturer of any Goods or neglect or from any instructions or materials provided by the Customer.
- 8.3 Any goods which have been adjusted modified or repaired otherwise than by the Company.
- 8.4 Any technical information recommendations statements or advice furnished by the Company its servants or agents not given in writing in response to a specific written request from the Customer before the Contract is made.

Extent of Liability

- 9.1 The Company shall have no liability to the Customer (other than liability for death or personal injury resulting from the Company's negligence) for any loss or damage of any nature

arising from any breach of any express or implied warranty or condition of the Contract or any negligence, breach of statutory or other duty on the part of the Company or in any other way out of or in connection with the performance or purported performance of or failure to perform the Contract except in accordance with this condition.

- 9.2 If the customer establishes that any Goods have not been delivered have been delivered damaged, are not of the correct quantity, do not comply with their description or are defective, the Company shall, as its option replace with similar Goods any Goods which are missing, lost or damaged, do not comply with their description or which are defective allow the Customer credit for their invoice value or repair any damaged Goods.
- 9.3 Where the Company is liable in accordance with this condition in respect of only some or part of the Goods the Contract shall remain in full force and effect in respect of the other or other parts of the goods and no set-off or other claim shall be made by the customer against or in respect of such other or other parts of the Goods.
- 9.4 No claim against the Company shall be entertained for any defect arising from adjustments alterations or other work which has been done to the goods by any person other than the Company.
- 9.5 In no circumstances shall the liability of the Company to Customer under this condition exceed the invoice value of the goods.

Force Major

- 10.1 The Company shall not be liable for any failure in the performance of any of its obligations under the Contract caused by factors outside its control.

Law & Construction

- 11.1 The Contract shall be governed by English Law and the Customer consents to the exclusive jurisdiction of the English courts in all matters regarding the Contract.
- 11.2 If any provision of these conditions is held by any court or other competent authority to be void or unenforceable in whole or in part these conditions shall continue to be valid as to the other provisions thereof and the remainder of the affected provision.
- 11.3 The headings of conditions are for convenience only and shall not affect their interpretation.



PROUDLY
BRITISH
MADE

THE LIMEHOUSE LAMP COMPANY LTD

The Limehouse Lamp Company (UK Head Office)
Unit 32 Mackley Industrial Estate, Henfield Road, Small Dole, West Sussex BN5 9XR
T: 00(44)1273 497070 F: 00(44)1273 497071
E: info@limehouselighting.com W: www.limehouselighting.co.uk

The Limehouse Lamp Company (USA)
5113 Forsyth Commerce Rd, Orlando, FL 32807
T: (844) 857-6337 F: (407) 894-2215
E: ussales@limehouselighting.com W: www.limehouselighting.com